

Adams Gardens Estate, London, SE16 4JG

A well-kept two bedroom, apartment split over two levels and located on the doorstep of Rotherhithe overground station. The ground floor boasts a spacious as bright reception room, a modern kitchen and entrance hall with additional storage. The first floor boasts two spacious double bedrooms, one with built in storage, and a stylish family bathroom. The surrounding area has excellent transport links as well as plenty of local amenities such as, cafes, bars, convenience store, The Burnel Museum, restaurants, the picturesque Rotherhithe Beach and Southwark Park.

- Excellent Transport Links
- Spacious Two Bedroom Apartment
- Plenty of Storage
- Naturally Bright
- Furnished
- Residential Location

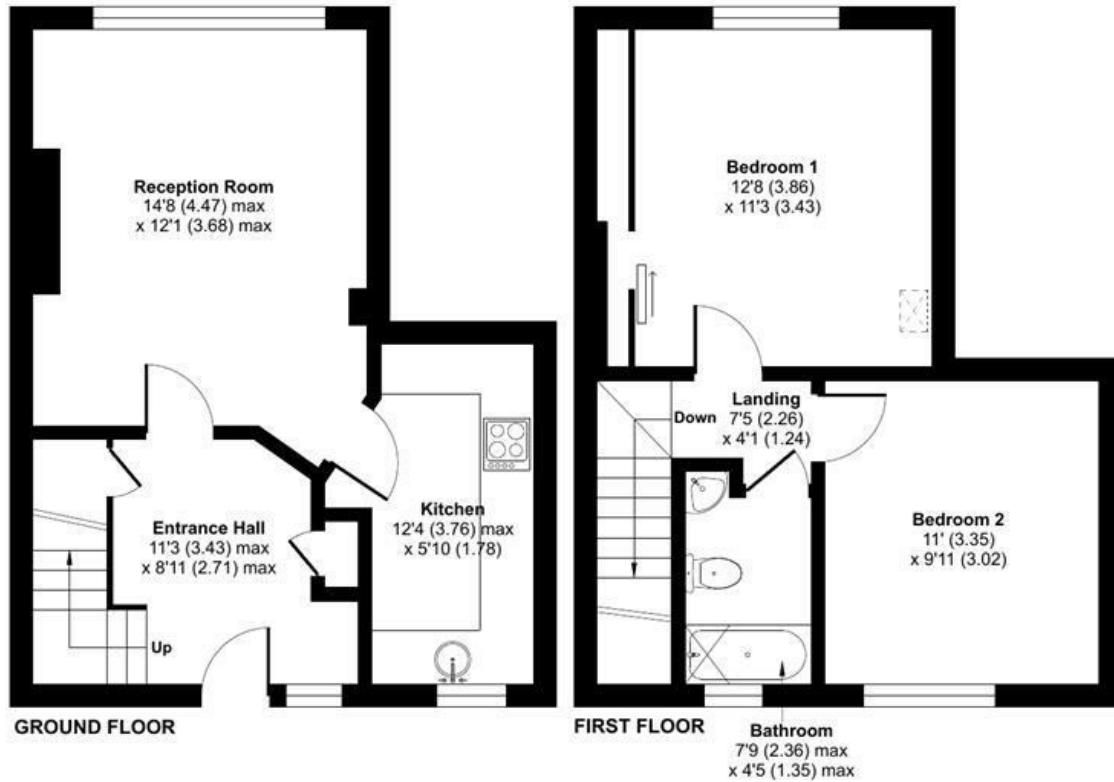
Alex & Matteo
ESTATE AGENTS

£2,000 Per month

Adams Gardens Estate, London, SE16

Approximate Area = 714 sq ft / 66.3 sq m

For identification only - Not to scale



Alex & Matteo
ESTATE AGENTS



Floor plan produced in accordance with RICS Property Measurement 2nd Edition, Incorporating International Property Measurement Standards (IPMS2 Residential). © nitchcom 2024. Produced for Alex & Matteo Estate Agents. REF: 1227127

Energy Efficiency Rating		
	Current	Potential
Very energy efficient - lower running costs		
(92 plus) A		
(81-91) B		
(69-80) C		
(55-68) D	62	71
(39-54) E		
(21-38) F		
(1-20) G		
Not energy efficient - higher running costs		
England & Wales		
EU Directive 2002/91/EC		